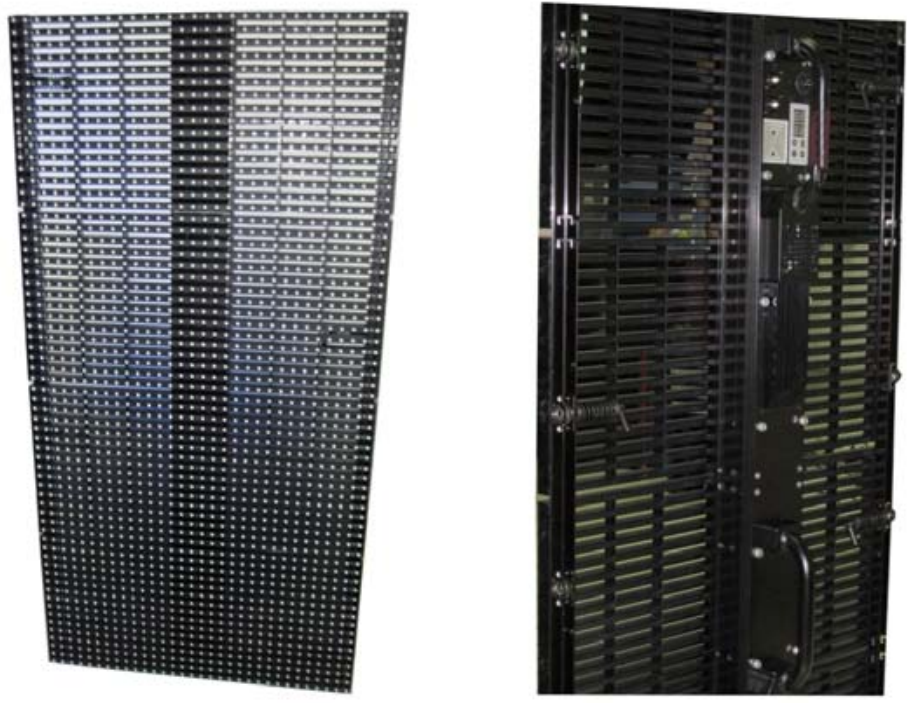


FLYER 18 - A New Transparent, Lightweight, Creative LED Display

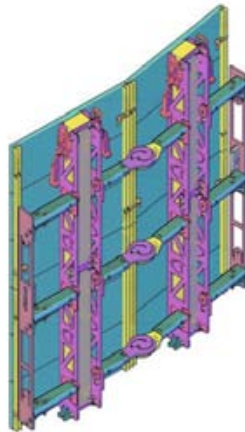
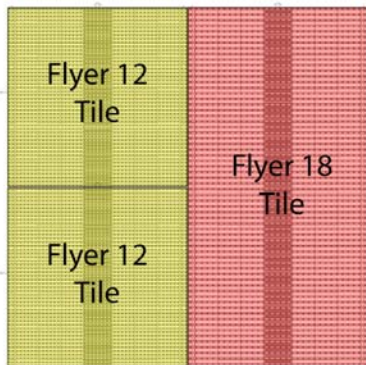


The new Flyer 18 is a custom designed 18mm LED display that features 50% transparency, light output of over 5000nit and is fully IP65 making it suitable for outdoor applications.

The Flyer 18 has the unique feature that it is fully mechanically compatible with our existing Flyer 12 product enabling production designers to create screens of mixed resolutions in one screen without additional rigging.

As with the Flyer 12, the Flyer 18 provides a high degree of transparency, while a simple removable shutter enables the screen to be converted from a see-through product to solid non see-through on an individual tile basis.

The Flyer 18 is available as a single tile to allow for maximum creative or in a touring module which will reduce rig and de-rig times. In either mode, the system allows the displays to be curved in a convex or concave forms or any combination of the two.



Compatible with Flyer 12 System

Product Specification

Individual Tile

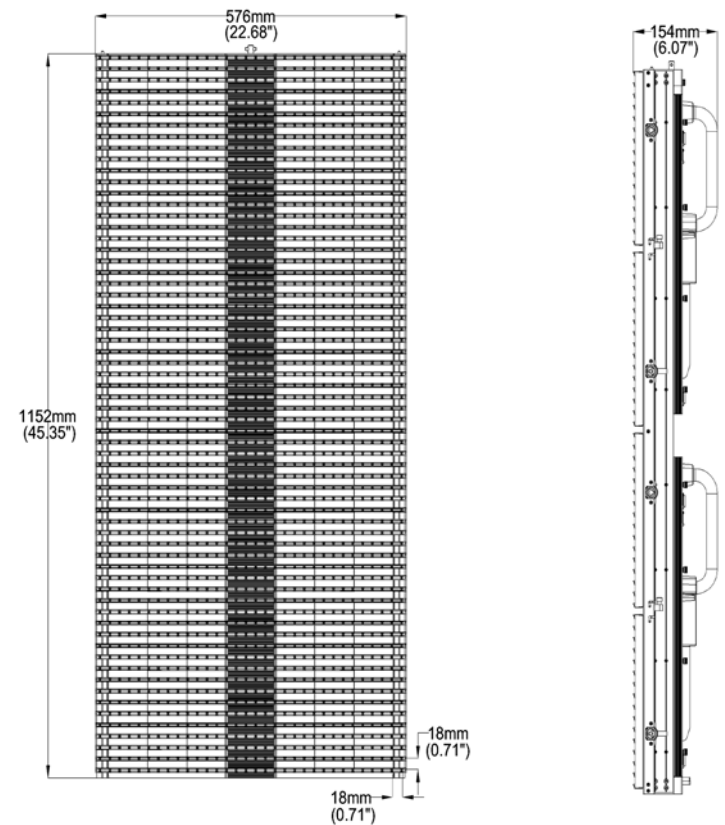
Pixel pitch	18mm
Brightness (Nit or cd/m ²)	5000
LED type/brand	3 in 1 SMD/SDK
Tile size (mm) w x h x d	576 x 1152 x 157.1
Tile size (inches) w x h x d	22.68 x 45.36 x 6.07
Viewing horizontal/vertical	120°/120°
Weight per tile	15.8kg/34.8lbs
Weight per m ²	23.8kg/52.5lbs
Pixels per tile	32 x 64
Pixels per m ²	3086 pixels/m ²
Transparency	50%
IP rating	IP65
Max power per tile	350 watts
Avg power per tile	150 watts
Temperature	-20 to 50° C
Temperature	-4 to 122° F

Rental Module

Module size (mm) w x h x d	1152 x 1152 x 154
Module size (inches) w x h x d	45.36 x 45.36 x 6.07
Pixels per module	64 x 64
Weight per module	50kg/110.2lbs
Weight per m ²	37.6kg/82.9lbs
Max power per module	700 watts
Avg power per module	300 watts

KEY BENEFITS

- Unique 18mm SMD LED display
- Full compatibility with Flyer 12mm
- Exceptional transparency
- Lightweight
- Rental and touring markets
- Improved brightness and contrast
- Powerful and cost effective



Creative Technology Ltd
 Unit E2
 Sussex Manor Business Park
 Crawley
 West Sussex
 RH10 9NH

Tel.: +44 (0)1293 582000
 Fax: +44 (0)1293 582010
 info@ctlondon.com
 www.ctlondon.com